



GOOD MORNING  
Have Good Trading Day

FRIDAY



Price is what you pay.  
Value is what you get.

- Warren Buffet



## MARKET PULSE

### INDIAN INDICES

NAME	CMP	NET CH.	%
SENSEX	27708	+322	+1.21
NIFTY	8602	+126	+1.50

### INDIAN ADR'S

SYMBOL	CLOSE	GAIN/ LOSS %
DRREDDY	44.12	-0.02
HDFCBANK	69.74	-0.34
ICICIBK	7.85	+0.03
INFY	13.79	-0.21
TATAMOTOR	40.09	-0.03
WIPRO	9.50	-0.12

### FII AND MF ACTIVITY

SYMBOL	In Crs.
FIIs Eq (Provisional)	1378
FIIs Index Future	567
FIIs Index Options	-361
FIIs Stock Future	1441
FIIs Stock Options	352
DIIs Eq (Provisional)	383

### CURRENCY

RBI RATE	25-JAN-2017
RUPEE - \$	68.1556
EURO	73.0901
YEN 100	59.9800
GBP	85.3104

## MARKET PULSE

### GLOBAL INDICES

NAME	CMP	NET CH.	%
DOW	20100	+32	+0.16
NASDAQ	5655	-1	-0.02
NIKKEI	19466	+63	+0.31
HANG SENG	23391	+16	+0.07
SGX NIFTY	8661	-33	-0.39

### WORLD COMMODITIES

FUTURE	U\$	CHANGES
CRUDE	53.84	+0.06
NATURAL GAS	3.350	-0.047
GOLD	1185.3	-4.4
SILVER	16.750	-0.100
COPPER	2.6595	-0.0135

### WORLD EVENTS

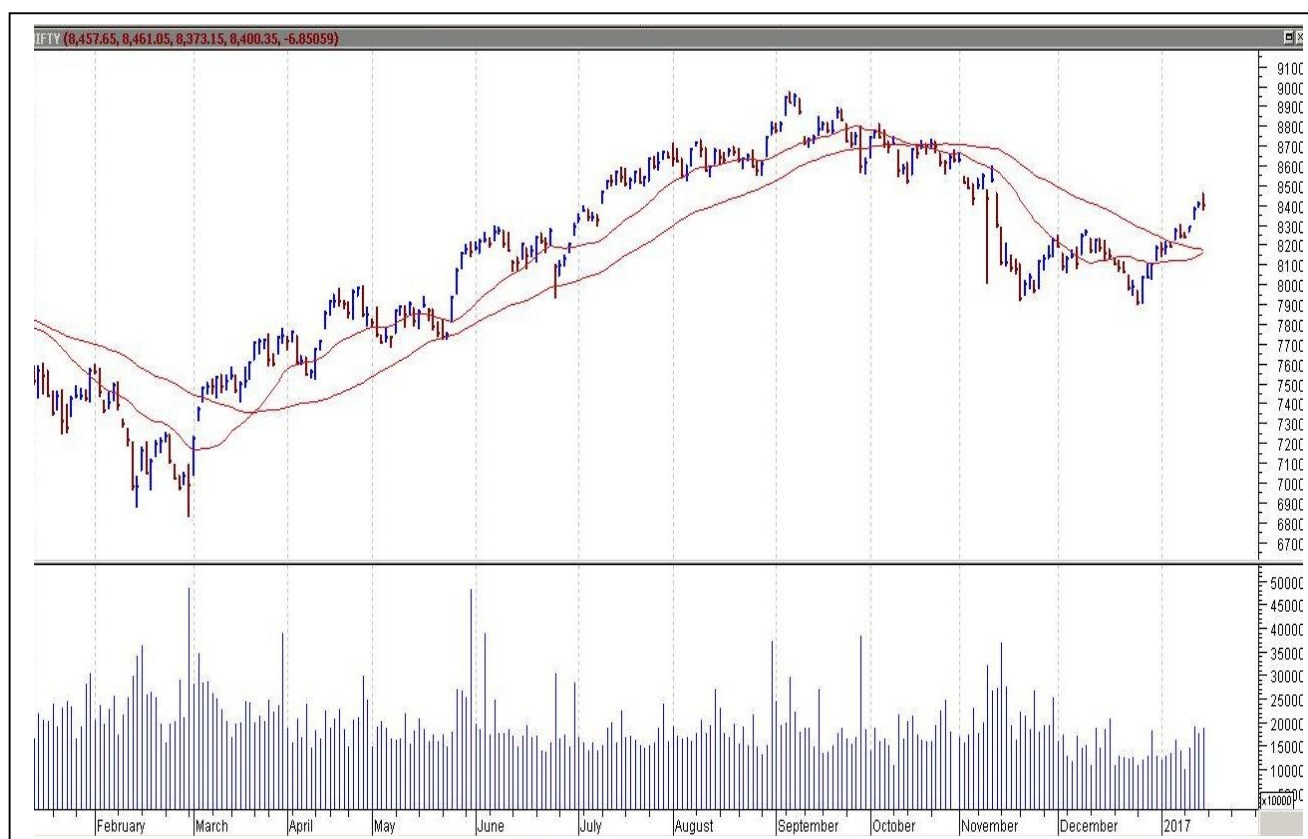
- US: Advance GDP q/q
- UK: NIL

## TOP STORY

- State Bank of Mysore reports net loss of Rs 20 crore in Q3.
- USFDA conducts inspection at Natco Pharma's Kothur Formulation Facility.
- Wockhardt reports consolidated net loss of Rs 53.91 crore in Q3.
- Tata Power's MPL wins Global Energy Management Award 2017.
- Nestle India ties up with DOMH for clean water.
- Biocon's arm bags three year contract from Malaysian Health Ministry.
- Kotak Mahindra International sells 2.11% stake in South Indian Bank.
- Wipro IT Services Revenue At Rs 13,196 Cr Vs CNBC-TV18 Poll Of Rs 13,215 Cr.
- Dilip Buildcon wins project worth Rs 911.07 crore in Maharashtra.
- VRL Logistics Q3 Net Profit Down 15.8 percent At Rs 21.8 Cr Vs Rs 25.9 Cr (YoY).
- IDFC Bank Q3 Net Profit Down 21 percent At Rs 191.3 Cr Vs Rs 242.2 Cr (YoY).



## NIFTY CHART



## MARKET COMMENTARY

Indian equity benchmarks traded on a jubilant note and closed in green for third consecutive day. The equity benchmarks rose to touch near two and half month high led by gains in Banking and Consumer Durables stocks. The benchmarks extended their rally on account of rollover of long position to the next month series on the final trading day of expiry of January Futures & Options contracts. Markets are generally excited about results declared by some finance companies as the numbers have not shown any major impact of demonetization. For today's trade Nifty likely to trade in the range between 8615 – 8635 in the upper side and 8575 – 8555 in the lower side.

### MARKET LEVELS

	CMP	SUPPORT LEVELS				RESISTANCE LEVELS			
NIFTY	8602	8575	8555	8545	8525	8615	8635	8645	8685
USDINR	68.07	68	67.9	67.8	67.7	68.15	68.25	68.35	68.45





#### BULK DEALS (BSE)

SCRIP	CLIENT NAME	BUY/SELL	QUANTITY	PRICE
ISMTLTD	INDIAN SEAMLESS ENTERPRISES LTD	B	13,383,870	10.7
ISMTLTD	VISHKUL LEATHER GARMENT PVT LTD	S	13,383,870	10.7
JKCEMENT	YADUPATI GAUR SINGHANIA	S	2,000,000	705.35
JKCEMENT	RELIANCE MUTUAL FUND - RELIANCE SMALL CAP FUND	B	586,000	705.45
JKCEMENT	DSP BLACKROCK MUTUAL FUND - DSP BLACKROCK MICRO CAP FUND	B	533,019	705

#### BULK DEALS (NSE)

SCRIP	CLIENT NAME	BUY/SELL	QUANTITY	PRICE
PNC	ERISKA INVESTMENT FUND LTD	SELL	1000000	23.5
PNC	KAMAL M.MORARKA	BUY	998621	23.5
STAMPEDE	USHA RANI MEENAVALLI	SELL	2258617	25.06
THERMAX	AMANSA HOLDINGS PRIVATE LIMITED	SELL	1260777	810

#### SCRIP'S IN F&O BAN

(To resume for normal trading below 80% of market wide limit required)

NIL

#### Initial Public Offering (IPO)

Company Name	Security type	Issue Start Date	Issue End Date	Status
NIL				



NIFTY 50 STOCKS: SUPPORT & RESISTANCE						
Symbol	Close	Support 1	Support 2	Pivot Point	Resistance1	Resistance2
ACC	1399	1364	1328	1388	1424	1449
ADANI PORTS	305	268	263	273	278	282
AMBUJACEM	229	225	222	228	231	234
ASIANPAINT	978	972	967	977	982	987
AUROPHARMA	706	702	698	708	712	719
AXISBANK	464	455	447	460	468	473
BAJAJ-AUTO	2850	2793	2736	2829	2886	2923
BANKBARODA	162	157	152	160	166	169
BHARTIARTL	311	306	301	310	316	320
BHEL	132	130	128	132	133	135
BOSCH LTD	22878	22018	21158	22526	23387	23895
BPCL	711	686	662	702	727	743
CIPLA	586	579	573	584	590	595
COALINDIA	317	310	303	315	322	326
DRREDDY	2996	2965	2934	2987	3018	3040
EICHERMOT	22991	22863	22735	23014	23142	23293
GAIL	476	472	467	475	479	482
GRASIM	928	908	888	925	945	963
HCLTECH	841	833	826	845	853	865
HDFC	1337	1298	1258	1320	1359	1381
HDFCBANK	1291	1275	1260	1285	1301	1311
HEROMOTOCO	3247	3154	3060	3215	3309	3370
HINDALCO	191	188	185	190	193	194
HINDUNILVR	869	860	851	865	874	879
ICICIBANK	260	257	254	259	262	264
IDEA	76	74	72	76	77	79
INDUSINDBK	1265	1255	1244	1262	1272	1280
INFRA TEL	352	349	345	352	355	358
INFY	937	932	927	939	944	951
ITC	266	261	257	264	268	271
KOTAKBANK	795	760	725	780	816	836
LT	1450	1429	1408	1441	1462	1475
LUPIN	1519	1504	1490	1517	1532	1545
M&M	1244	1221	1198	1235	1257	1271
MARUTI	5803	5729	5656	5782	5855	5907
NTPC	171	170	169	172	173	175
ONGC	205	203	200	204	206	208
POWERGRID	203	202	201	203	204	205
RELIANCE	1017	1011	1006	1022	1028	1039
SBIN	259	255	251	258	262	265
SUNPHARMA	636	631	626	639	644	651
TATAMOTORS	549	543	537	547	553	558
TATAMTRDVR	341	337	334	341	345	348
TATAPOWER	80	79	78	80	81	82
TATASTEEL	470	465	460	471	475	481
TCS	2353	2327	2302	2344	2369	2386
TECHM	466	461	456	467	472	479
ULTRACEMCO	3680	3639	3598	3666	3708	3735
WIPRO	474	469	464	476	481	489
YESBANK	1407	1379	1352	1395	1422	1437
ZEEL	498	485	472	494	507	516



## CORPORATE ACTION / BOARD MEETINGS

NSE Download Ref No. : NSE/CML/3402: Face Value Split - LT Foods Limited from rs. 10 to rs.1 This circular shall be effective from February 7, 2017.

NSEDownloadRef.No.: NSE/CML/34043:Delisting 1.ARIHANTRED(Arihant Threads Limited)2.KAMPERCONC (KamperConcast Limited)3. KRISHNAENG (Krishna Engineering Works Limited)This circular shall be effective from February 07, 2017.

NSEDownloadRef.No.: NSE/CML/34063: Listing of Equity Shares of Bhandari Hosiery Exports Limited This circular shall be effective from January 30, 2017.

### BOARD MEETINGS

COMPANY NAME	DATE	PURPOSE
DBCORP	31-Jan-17	Interim Dividend Rs 4/- Per Share
PERSISTENT	31-Jan-17	Interim Dividend
SIEMENS	31-Jan-17	Dividend - Rs 6/- Per Share
HCLTECH	1-Feb-17	Interim Dividend Rs 6/- Per Share (Purpose Revised)
RBL	1-Feb-17	Interim Dividend Rs 6/- Per Share
IRB	2-Feb-17	Interim Dividend
BEL	2-Feb-17	Interim Dividend
IIFL	2-Feb-17	Interim Dividend
VRLOG	2-Feb-17	Interim Dividend
GANDHITUBE	2-Feb-17	Interim Dividend Rs 9/- Per Share (Purpose Revised)
GAIL	2-Feb-17	Interim Dividend
ASHOKA	2-Feb-17	Interim Dividend Rs 0.80/- Per Share
WIPRO	2-Feb-17	Interim Dividend
RML	2-Feb-17	Interim Dividend Rs 2/- Per Share
JMFINANCIL	2-Feb-17	Interim Dividend Rs 0.65/- Per Share
ATLANTA	3-Feb-17	Extraordinary General Meeting
GODREJCP	6-Feb-17	Interim Dividend
SHREECEM	6-Feb-17	Interim Dividend

## NEWS & RUMOURS:

- Gold (Spot Dollar) major support = \$1161/\$1132 & Resistance = \$1231/\$1267.
- Crude oil range->\$49 to \$59.
- Dow Tops 20,000 as Earnings Feed Rally, Bonds Fall: Markets Wrap: - The Dow Jones Industrial Average climbed past 20,000 for the first time as stocks around the world extended a rally after corporate earnings reignited investors' optimism in economic growth. Bonds sold off with oil.
- Dollar lower as Trump calls for investigation on voter fraud: - The dollar fell to fresh seven-week lows against a currency basket on Wednesday after President Donald Trump said on Twitter that he would seek a "major investigation" into alleged voter fraud.
- Gold falls \$10 as global stock market rally dampens demand: - Gold prices fell sharply during North American morning trade on Wednesday, moving further away from this week's two-month high as the metal's safe-haven appeal was dampened amid a rally in global stock markets.
- U.S. natural gas pushes higher on bets for bullish storage data: - U.S. natural gas futures rose for the third day in a row on Wednesday, as weather forecasts turned colder, boosting near-term demand for the heating fuel.
- Oil stays lower as crude stocks rise by 2.8M barrels: - Oil prices were lower during North American morning hours on Wednesday, holding on to losses after data showed that U.S. crude supplies rose for the third week in a row last week. The U.S. Energy Information Administration said in its weekly report that [crude oil inventories](#) rose by 2.9 million barrels in the week ended January 20. Market analysts' expected a crude-stock gain of 2.8 million barrels.

## TRENDS & OUTLOOK – DATE: 27-Jan-2017

### PRECIOUS METALS:

COMMDITY (MCX)	S2	S1	PIVOT POINT	R1	R2
GOLD (Feb)	27790	28121	28470	28791	29050
SILVER (Mar)	38500	39900	41100	42300	43786

### BASE METALS

COMMDITY (MCX)	S2	S1	PIVOT POINT	R1	R2
COPPER (Feb)	394	399	406	412	421
ZINC (Jan)	180.25	184.30	189.25	194.20	197.55
LEAD (Jan)	153.45	157.25	161.10	165.55	168.55
NICKEL (Jan)	621	645	660	681	697

### ENERGY

COMMDITY (MCX)	S2	S1	PIVOT POINT	R1	R2
CRUDE OIL (Feb)	3366	3475	3610	3745	3880
NATURAL GAS (Feb)	216	221	227	235	241

### DATA TALKS : TODAY'S ECONOMIC DATA :

Advance GDP q/q, Core Durable Goods Orders m/m, Advance GDP Price Index q/q, Durable Goods Orders m/m, Revised UoM Consumer Sentiment, Revised UoM Inflation Expectations.





LET THE  
WOMAN  
POWER RISE

**WOMEN  
DESK**

All the Ladies in the house are  
cordially invited to come  
& explore their trading talents.

**TOLL FREE: 18001030059**





Registered Office

Indira House, 3rd Floor, 5 Topiwala Lane,  
Opp. Lemington Road Police Station, Grant Road (East), Mumbai - 400007.

Corporate Office

'Ramavat House' E-15, Saket Nagar, Indore - 452018 (M.P.)

Customer Care

Tel: +91-731-4097170/ 71/ 72/ 73/ 74 M. +91 93031 72345

Email: [customercare@indiratrade.com](mailto:customercare@indiratrade.com) [www.indiratrade.com](http://www.indiratrade.com)



INSTITUTIONAL DEALING UNIT

Africa House, 5, Topiwalla Lane, Lamington Road, Mumbai, 400007

Tel: +91 22 30080678 Fax : +91 22 23870767 Email : [ie@indiratrade.com](mailto:ie@indiratrade.com)

**Disclaimer**

This report is for private circulation within the Indira Group. This report is strictly confidential and for information of the selected recipient only and may not be altered in any way, transmitted to, copied or distributed, in part or in whole, to any other person or to the media or reproduced in any form. This report should not be construed as an offer or solicitation to buy or sell any securities or any interest in securities. It does not constitute a personal recommendation or take into account the particular investment objectives, financial situations, or any such factor. The information, opinions estimates and forecasts contained here have been obtained from, or are based upon, sources we believe to be reliable, but no representation of warranty, express or implied, is made by us to their accuracy or completeness. Opinions expressed are our current opinions as of the date appearing on this material only and are subject to change without notice.